

Using PPD. Initialization

The PPD is a Portable Programming Device used to communicate with the locks and transfer data from the PC on the locking schedule we have designed. Should you have any doubts on this device usage, please, refer to the PPD Smart User's Manual that you will find included in the RW software CD-ROM.

Main menu:

Below, you can review a diagram of PPD menu options. It is important to note that all these options will not always be present, depending on their being enabled or not from the management computer. As default value, DIAGNOSTIC and COLLECT OPENINGS options will be present, although we have not enabled them on the computer.

Initializing doors:

When we have our locking schedule finished on our computer, we must transfer all the data from our computer to the portable programming device.

We will initialize every door granting it a name that will be definitive from now onwards.

Ensure that your computer clock time (on the PC that you are running the SALTO Software) is correctly adjusted to show the correct time, as it will determine the time on which the electronic locks operation will be based.

- To download all our locking schedule data on the portable programming device, connect the device to our computer by means of a serial cable, and go to program main menu. Click on the *PPD* icon.
- If it is the first time you use the PPD to download a locking schedule, you may be prompted with an

error message window. Click on the **YES** button to confirm that, from now on, your PPD will be exclusively devoted to your installation.

- A window like the one below will be displayed. In this window we see all doors pending initialization are selected.
- It is not compulsory to initialize all of them simultaneously, though it is highly recommended not to leave any pending door.

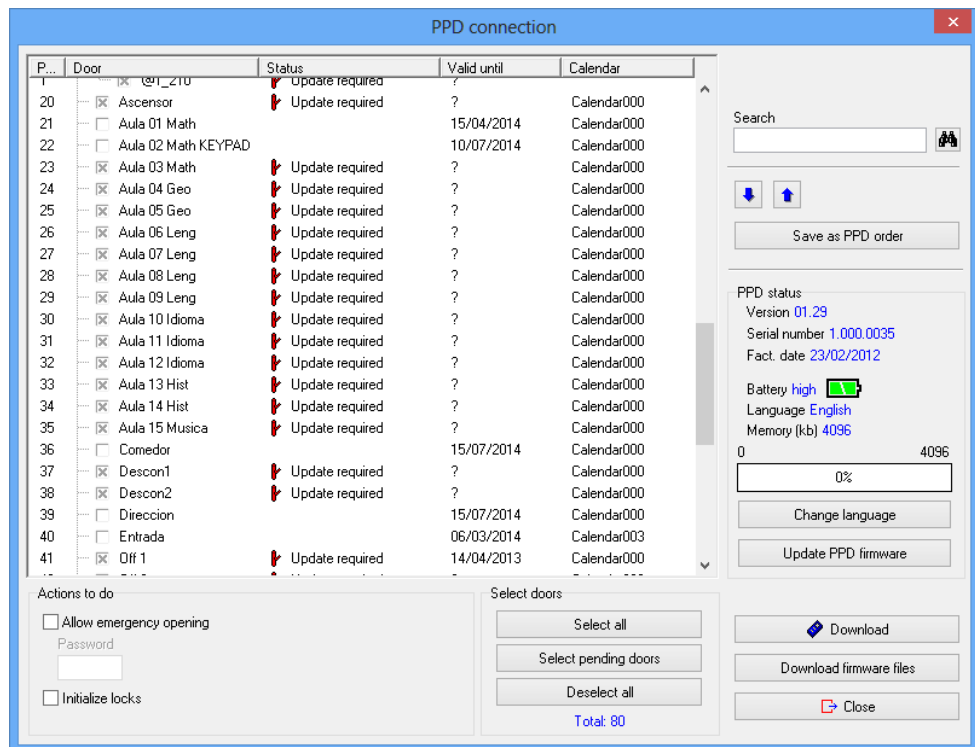


Figure 63

On the lower left-hand side corner we find a box called **ACTIONS TO DO**. In this box we will tick off those actions to be done with PPD.

1. If we tick off **ALLOW EMERGENCY OPENING**, this option will later be shown on the PPD menu.
2. If we tick off **INITIALIZE LOCKS**, this option will later be shown on the PPD menu. We will now perform this action.

To tick off these two possible options, bear in mind that it is not enough to tick off the action to do, but also to mark with a cross the door or doors on which you want to do the action.

- If we do not tick off any of these two options, the only option available in the PPD will be: Update locks.
- We can change the language of PPD display messages. In order to do that, click on the *CHANGE LANGUAGE* option.
- When we get all doors arranged in order, click on the *DOWNLOAD TO PPD* option.
- Data transfer from computer to PPD will last a few seconds. Watch the computer screen and when you see the progress bar of the active window reaches 100%, you will know the transfer is over.

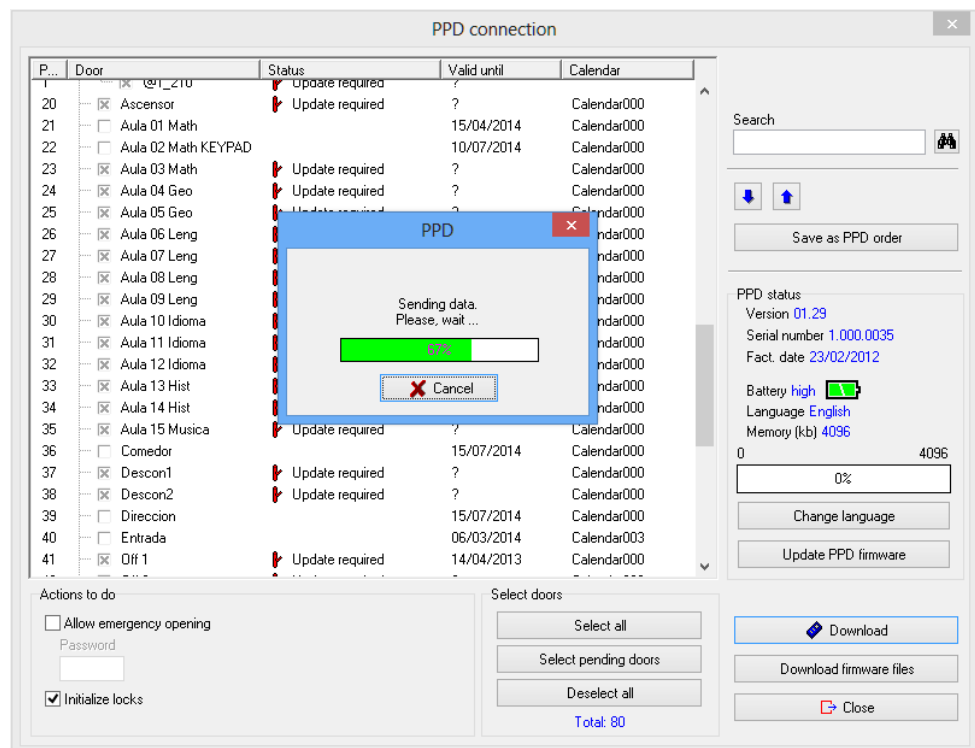


Figure 64

- Now you can disconnect serial cable, and go to every door to initialize them.
- Connect to the PPD the cable connected to a special card with 3 conductors (on the opposite end you will have a RJ11 phone connector).
- Approach to the first door of your system, plug in the special cable and turn the PPD on.
- From the main menu window, select *INITIALIZE* option. You will get the door list. Now choose the door that you want to initialize. Be especially careful when performing this step, since the door name is limited.
- When you view on screen the name of the door to be initialized, click on the OK button of the PPD, and the device will request that you connect it to the lock.
- You will get on the PPD screen a *CONNECT TO LOCK* message. Insert in the lock reader the card cable and watch the PPD screen. You will get a progress bar and a sharp beep sound emitted, that means that data transfer is in progress.
- If, by mistake, this communication is interrupted for longer than three seconds, you will have to repeat the communication.
- Repeat these steps with every door within your facilities. Take into account that door names will not disappear from the door list contained in the *INITIALIZE* option, by having simply initialized a door. This will allow you to reinitialize a door if you have given it a wrong name.
- When you have completed the initialization process, reconnect the PPD to your computer through the serial cable, and click on *CONNECT PPD* icon. This will update software data comparing it with actual battery status values, as well as pending updates. At this point, *INITIALIZE LOCKS* menu option will not appear on your PPD main menu.